

Stackable frame **BF10-18**

Pump specifications:

Type.....	BA100K D193
Max. flow	130 m ³ /hour (572 US GPM)
Max. pressure	15 mwc (49 ft.)
Connections.....	DN100 (4")
Solids handling	82 mm (3,23")
Impeller type	Channel impeller
Priming system	BBA MP50
Electric motor.....	7.5 kW – 4 Pole
Voltage	400/690V
Motor control.....	See options page 4
Frame or canopy	BF10-18 or L10-18
Dry weight.....	1100 kg / 1200 kg

FEATURES

BA auto prime pump

The BA range of pumps has been designed with a clear focus on reliability, efficiency and durability. Featuring the 100% mechanical priming system, the BA series pumps quickly prime and re-prime, even from dry conditions. The heavy build style of both pump and canopy make the BA range perfect for use in the strenuous contractor market.

World-class performance

The BA range is built to be deployed on the most demanding dewatering and sewage bypassing applications. Using high efficiency pumps and electric motors, the pumps offer maximum performance at minimal cost, fully in-sync with the company philosophy of "Lowest cost of ownership".

Electric pumps in canopy

- Extremely low noise level
- Maximum safety while running
- Better resistant to vandalism
- More space for your branding
- Optimal weather protection
- Minimal ageing, therefore stable in value

Complete package designed & built by BBA Pumps

- Complete in-house design & production
- Over 60 years of experience in the market
- Extensive testing facility in-house
- Contemporary & functional design
- Durable & eco-friendly materials
- Custom builds available

After sales service & product support

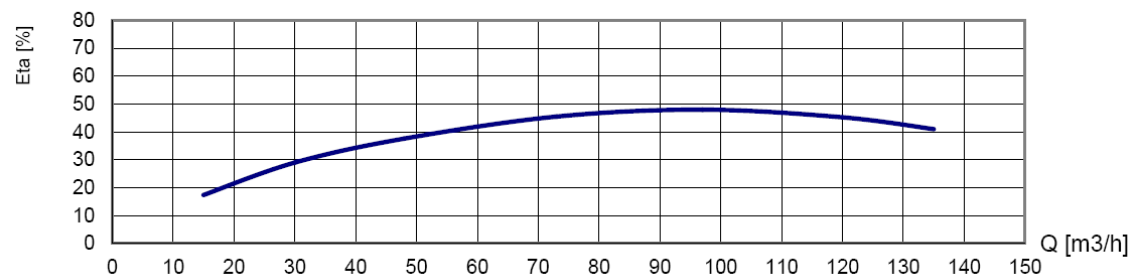
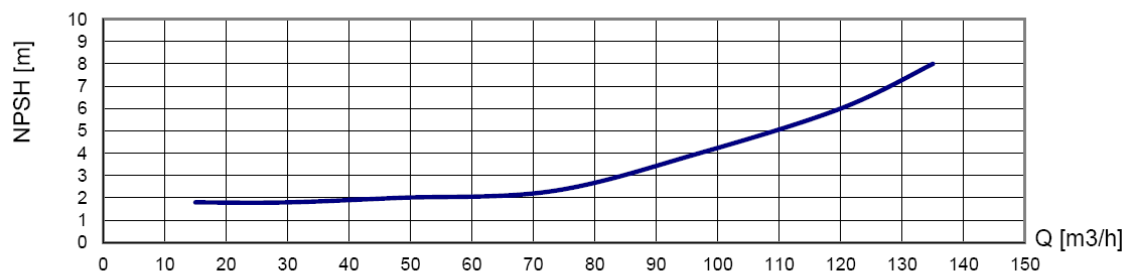
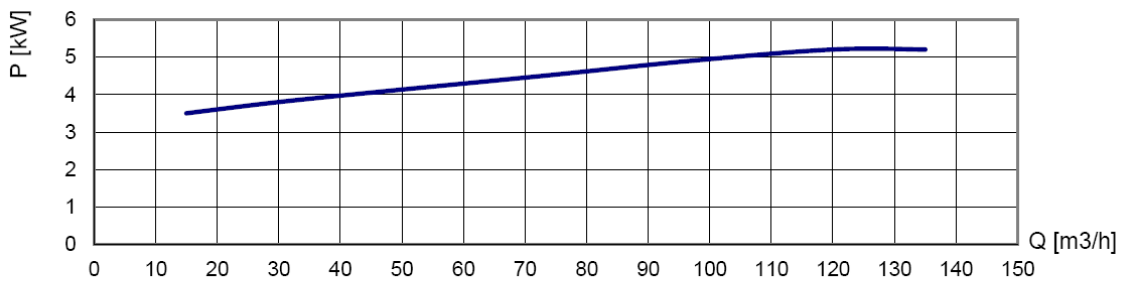
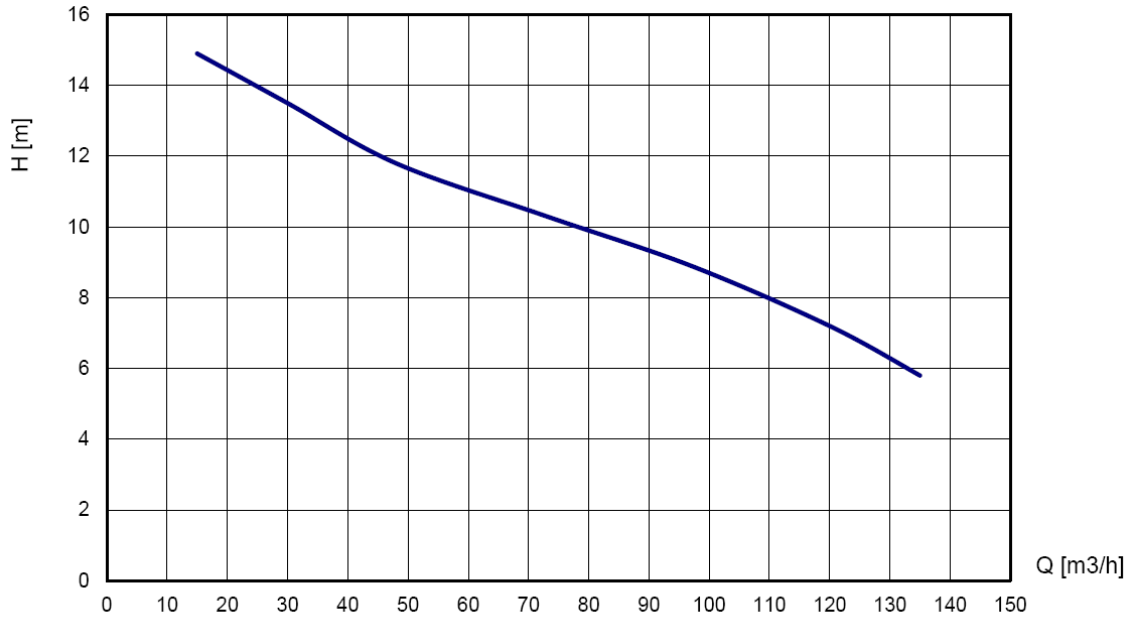
- Single supplier for parts, spares & accessories
- Dedicated customer help-desk (24h service)
- Dedicated service department in-house
- Global parts distribution network
- Optional global on-site servicing
- Extensive training options available (technical & commercial), on-site or in-house



Canopy **L10-18**

PERFORMANCE CURVES (1465 RPM)

Continuous duty according ISO 9906



STANDARD TECHNICAL SPECIFICATIONS

BBA auto prime pump

Pump type.....BA100K D193
 Max. flow.....130 m³/hour (572 US GPM)
 Max. head.....15 mwc (49 feet)
 Impeller type.....Channel impeller
 Solids handling.....82 mm (3.23 inch)
 Pump casing.....Cast iron GG20
 Impeller.....Ductile iron GGG40
 Pump shaft.....C45
 Shaft seal.....Mechanical seal
 Seal faces.....Tung/Tung
 Seal rubbers.....Viton

BBA priming system

Pump type.....BBA MP50 Diaphragm pump
 Air handling capacity.....50 m³/h (30 cfm)
 Max. vacuum.....8.5 m (29 Hg)
 Drive.....Electric motor 2.2kW - 400V
 Start/stop.....Fully automatic
 Float box.....Aluminium
 Non return valve.....Cast iron GG25
 Check valve disc.....Buna-N

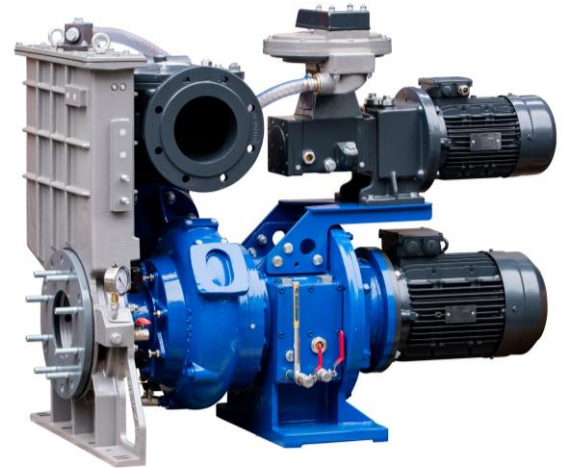
Electric motor

Motor brand.....Hoyer
 Motor type.....HMA3 132M-4
 Power kW (Hp).....7.5 kW (7.5 Hp)
 Rated Voltage.....400/690V 50Hz
 Current (I nom.).....14.5 Amp
 4-pole.....1460 RPM
 Efficiency.....90.7%
 IE3.....EC Directive 2005/32

BBA stackable frame and canopy

Frame.....Steel hot dip galvanized
 Dimensions L x W x H.....1800 x 1040 x 1405 mm
 Dimensions L x W x H.....71 x 41 x 55,3 inch
 Lifting point.....Fitted with single lifting point
 Forklift pockets.....Fitted with 2 forklift pockets
 Stackable.....Frame and canopy are stackable
 Control panel.....Softstarter (other options see page 4)

All electrical components **safe** and **dry** behind a lockable door.



MOTOR CONTROLS (configurable)

Mobile electric pumps in stackable frames or sound attenuated canopies are equipped with a lockable compartment. This is where the electrical components – such as the motor control – are mounted safely and dry. Configure your pump unit with one of the motor controls listed below.

DOL	
Direct On Line	With DOL delivery, the electric BBA pump unit is supplied bare without a lockable compartment or motor control. To prevent pump damage, the user must ensure a proper motor start method.

BASIC	
Star-Delta	With Basic delivery, the electric BBA pump unit is supplied with a star-delta switch. This is only possible for pumps with a motor power up to 30 kW and sufficient available electrical power due to peak current during start-up. (The vacuum pump always runs together with the main pump)



STANDARD	
Soft Starter <i>Most popular</i>	The Standard package is the most popular; the BBA electric pump unit is fitted with a soft starter. This motor control ensures a smooth start with constant acceleration, reduces starting current and avoids unnecessary mechanical stress on the pump. Another advantage is the linear stop, which prevents pump damage due to water hammer.



VFD	
Variable Frequency Drive	With the VFD model, the electrical BBA pump unit is equipped with a Variable Frequency Drive. This allows you to regulate the water flow and pressure by adapting the motor speed. In addition to energy savings, variable frequency drives offer many features and optimum pump protection. The unit is also equipped with a more powerful motor so that the pump can run up to 60 Hz.



	DOL	BASIC	STANDARD	VFD
Automatic level control	X	X	✓	✓
PTC thermal protection	X	X	✓	✓
Direction of rotation / phase loss protection	X	✓	✓	✓
Hour counter / malfunction lamp / switch	X	✓	✓	✓
Emergency stop according to 'SIL 2'	X	✓	✓	✓
Vacuum pump automatic on/off	X	X	✓	✓
Multilingual display	X	X	✓	✓

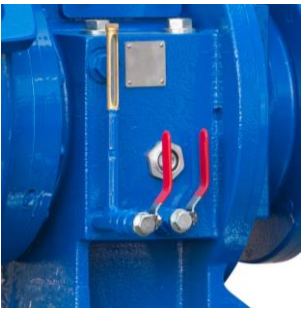
Discuss other specific options with your account manager or BBA Pumps distributor.



Channel impeller
GGG40 channel impeller,
ductile iron, solids handling
82 mm.



Large inspection covers
Easy access to float box,
impeller and non-return valve.



Easy inspection
Oil glasses, drain valves and
fill plugs are all easily
accessible.



Priming system
Diaphragm pump,
air-cooled, water-resistant
and oil-spillage free.
Air capacity of
50 m³ per hour.



4 Year limited warranty
The BBA limited warranty
covers years or operating
hours whichever occurs first.
For more details please
consult the BBA warranty
book.



User Manual BA series
Extensive user manual with
important information
concerning the pump unit,
pump installation and safety
warnings. Available in several
languages.

Pictures used are for illustration purposes only.